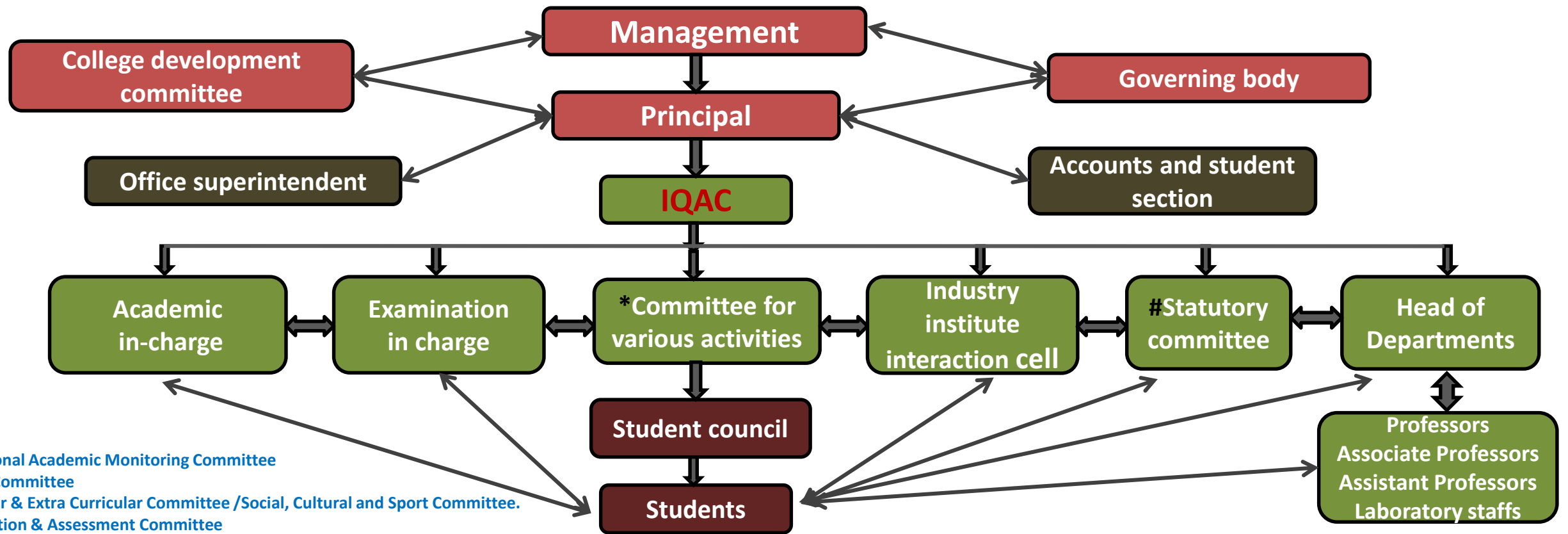


# ORGANOGRAM



\*

- Institutional Academic Monitoring Committee
- Alumni Committee
- Curricular & Extra Curricular Committee /Social, Cultural and Sport Committee.
- Examination & Assessment Committee
- Herbal Garden, Green Campus & Museum Committee
- Industry – Institute Interaction, Training & Placement Cell & KG Sanjeevani.
- Internal Quality Assurance Cell
- Patent, Innovation & Entrepreneurship Cell & Staff, Student Development Cell
- Purchase, Store, Inventory & Instrument Committee
- Students Feedback & Disciplinary, Student life Center (student affair & welfare) Medical & emergency, Canteen, Hostel Committee
- Grievance & Sexual Harassment Redressal Committee, Women Internal Compliant Committee, Vishakha cell Internal Complaints Committee
- Student Redressal Committee
- Admission Committee
- Library Committee
- Institute Website Update Committee
- Transportation, Housekeeping, Maintenance & Internal Audit committee

- NAAC steering committee
- Governing body committee
- NAAC working committee
- Media Cell
- Right to Information (RTI) & Knowledge Cell)

#

- SC/ST/OBC/ Minority Committee/ Anti-Discrimination Cell (Promotion of Equity and Grievance Redressal) & Gender Sensitization Cell
- Anti-Ragging Committee/ Anti-Ragging Squad
- Governing body committee